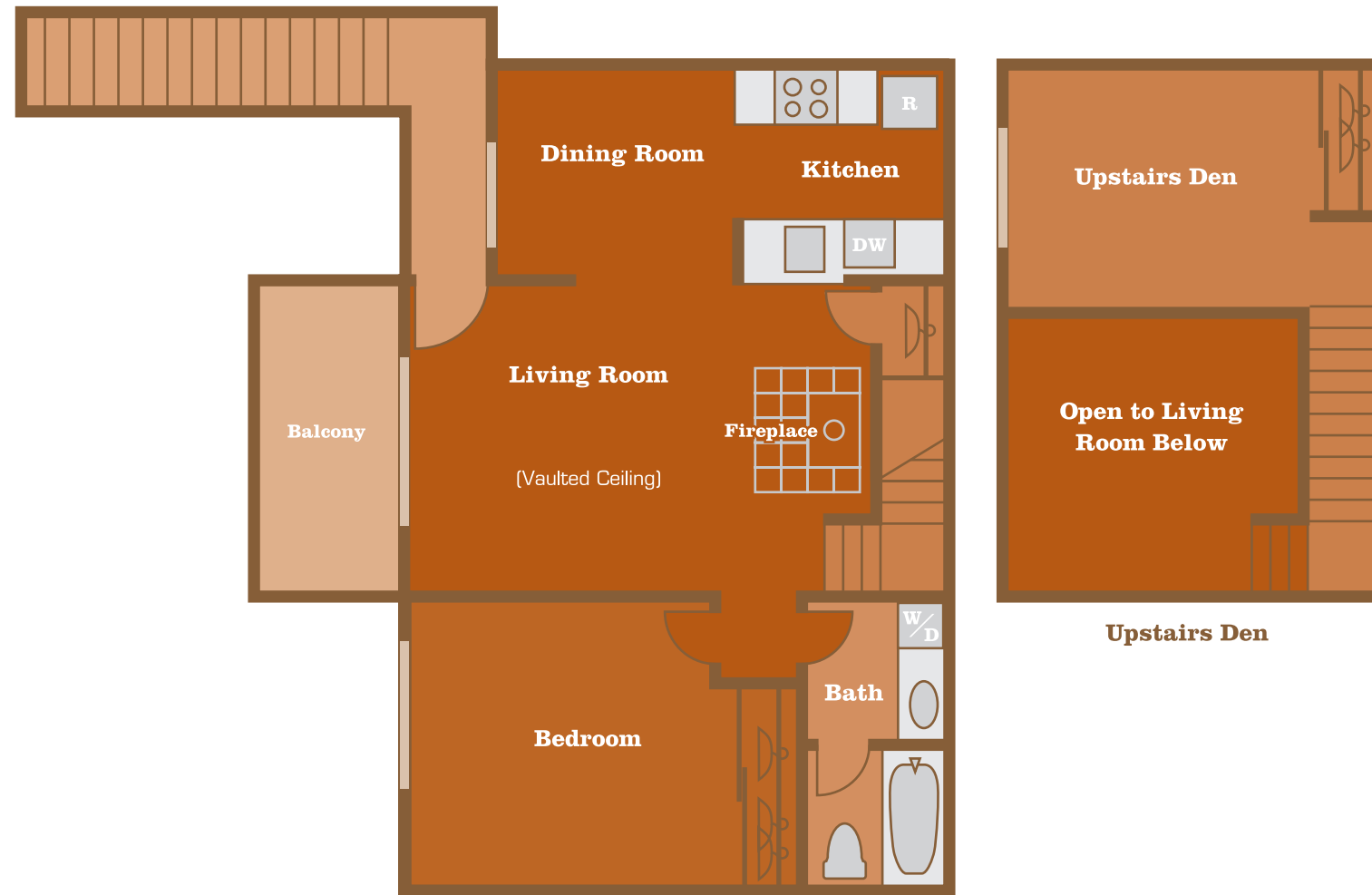


Cyprus

One Bedroom/One Bath/Plus Den
859 Living Space
78 Patio
937 Total



3500 N. Hayden Road
Scottsdale, Arizona 85251
480.656.2565 | sunscapescottsdale.com



These floor plans are not for construction documents; construction documents may differ from these floor plans as a result of product modifications, corrections and improvements. Mechanical, electrical and plumbing equipment locations will vary due to field conditions. Plans are not to scale. The total square footage is approximate. The developer reserves the right to modify the plans anytime without notice. Floor plans are for illustrative purposes only. Variations may exist. The square footage of the Units shown on these floor plans is calculated from the exterior face of the perimeter wall of the building (excluding any popouts or projections) and the center of any demising wall separating the Unit from another Unit and to the center of any wall separating the Unit from any common corridors or hallways. The square footage of the Units shown on these floor plans is not the square footage of the area within the legal boundaries of the Units as shown on the recorded condominium plat. Washers and dryers not available in all units.

Sales and marketing by
Eco Living Group
Keller Williams Realty East Valley, Independent Broker Member

